

RENEWABLE ENERGY & ENERGY EFFICIENCY

2020 FACT SHEET



OUR 2020 GOAL AND PROGRESS

We have a 2020 goal to ensure that **60 per cent of our energy requirements come from renewable and low-carbon sources.**

At the end of 2019, we were using 53.3 per cent renewable and low-carbon energy in our operations.

WE ARE SUPPORTING THE DEVELOPMENT OF RENEWABLE AND LOW-CARBON ENERGY GENERATION, AND MAXIMISING ENERGY EFFICIENCY OPPORTUNITIES ACROSS ALL OUR BUSINESSES.

Our commitment and approach

We are aiming to source at least 60 per cent of our manufacturing energy needs from low- and no-carbon sources by 2020, including natural gas, LPG, wood, direct renewables from onsite sources and indirect renewables supplied through grid connected power purchase agreements.

We also set energy intensity targets for our manufacturing operations and focus on energy efficiency throughout our value chain.

All our carbon reduction and energy efficiency programs are guided by regulatory requirements and relevant company policies, including the Group-wide *Environment Policy*, which confirms our commitment to minimising our environmental impacts, energy use and associated carbon footprint.

Each year we complete all mandatory external reporting related to our use of energy such as that required under Australia's National Greenhouse and Energy Reporting Scheme, and voluntarily complete the CDP Climate Change questionnaire.



53.3%

ENERGY USED

in our operations is from renewable or low-carbon sources



Our Cibitung solar project will be the **LARGEST ROOFTOP SOLAR INSTALLATION IN INDONESIA**



INDONESIA'S LARGEST ROOFTOP SOLAR

Across Amatil we continue to invest in renewable energy projects, including Indonesia's largest rooftop solar project at our Cibitung facility which has a generation capacity of 7.1 megawatts. The Cibitung project, when complete, will offset 8.9 thousand tonnes of carbon emissions per annum.

2019 Total energy use by fuel/energy source (manufacturing)

Including renewable and lower carbon energy split

		2019 GJ	2019 % of total
Low-carbon & renewable	Natural Gas	693,962	41.8%
	Sustainable Wood	22,220	1.3%
	LPG	51,618	3.1%
	Renewable Grid Electricity	109,290	6.6%
	On-site Solar	7,523	0.5%
	TOTAL	884,613	53.3%
Other energy	Non-Renewable Grid Electricity	622,151	37.5%
	Diesel & Petrol	152,063	9.2%
	TOTAL	774,214	46.7%
TOTAL	1,658,827	100.0%	

Renewable energy projects

As at the end of 2019, 53.3 per cent of the energy used in our operations is now renewable or from low-carbon sources. Currently, renewable energy usage in our manufacturing operations across all countries is less than 10 per cent, with the bulk of our low-carbon energy sourced from natural gas.

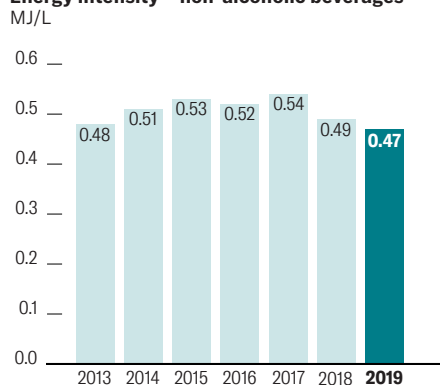
We continue to invest in renewable energy projects around our region. Following the launch of our 1.1 megawatt rooftop solar panel installation in Fiji in 2017, one of the largest in the country, we have initiated three onsite solar projects in Australia – at Eastern Creek, Richlands and Kewdale – with a combined generation capacity of 3.5 megawatts, in addition to Indonesia's largest rooftop solar project at Cibitung, with a generation capacity of 7.1 megawatts. The Cibitung project will offset 8.9 thousand tonnes of carbon emissions per annum. In Australia, we are using the Large-scale Generation Certificates (LGCs) created from these projects to meet the mandatory minimum renewable power percentage required under the national Renewable Energy Target (RET), and currently trading any excess certificates. In other countries, these projects are providing direct renewable energy to our sites and reducing our emissions accordingly.

In New Zealand, the electricity we purchase to use in manufacturing is 100 per cent renewable. In Australia, we have entered into a long-term power purchase agreement with the Murra Warra Wind Farm in Victoria, which became operational in 2019. Although our electricity is not directly sourced from this project, the agreement means that we are contributing to the overall development of renewables in Australia. In addition, the Murra Warra Wind Farm provides us with access to LGCs – a proportion of which we are currently trading on renewable certificate markets.

Energy efficiency

We continue to invest in energy efficiency programs in all countries. These include rolling out additional sub-metering and energy efficient lighting, and considering energy efficient equipment in our bottling and packaging manufacturing plants. Over time, we are upgrading the fridges used in customer premises to more energy efficient models, as well as replacing the refrigerants used in those fridges to mitigate against further global warming.

Energy intensity – non-alcoholic beverages



PUBLISHED MAY 2020. ALL PERFORMANCE DATA IS AS AT THE END OF 2019 CALENDAR YEAR, UNLESS OTHERWISE STATED.

ROOFTOP SOLAR IN AUSTRALIA

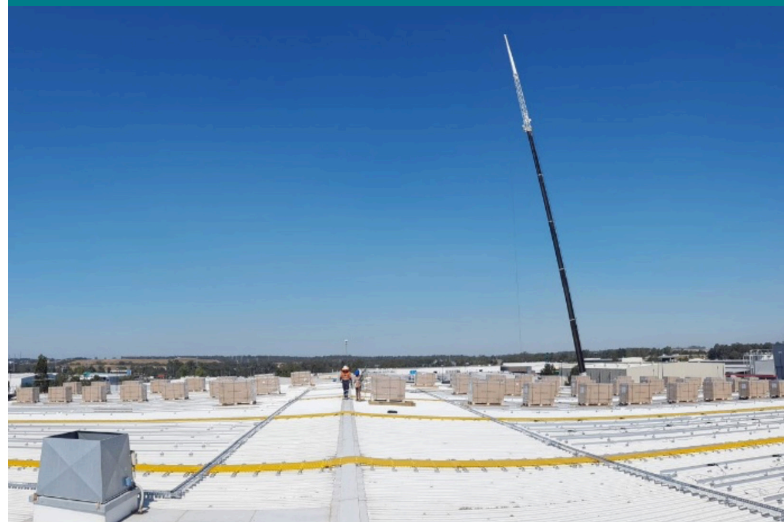
In 2019, we continued the significant expansion of our rooftop solar program, switching on 10,000 panels across our main Australian manufacturing sites at Eastern Creek (NSW), Richlands (QLD) and Kewdale (WA). As a result, Coca-Cola Amatil is now drawing around 14 per cent less energy from the local electricity grid across all three sites, and using solar instead.

Highlights for our rooftop solar portfolio in 2019 included:

- 5,200 panels covering 8,516 square metres on the roof of the Coca-Cola Amatil Distribution Centre in Sydney's Eastern Creek.
- Switching on Richlands 3,000+ solar panels in September (now one of the largest ten rooftop solar systems in Australia).
- Going live at Kewdale in November with 2,200+ solar panels.

Our solar panel portfolio represents a key part of Amatil's commitment to achieving the national RET. Renewable energy systems generate LGCs for Amatil – a proportion of which are retired to meet RET obligations.

Amatil's significant and growing commitment to solar power is supporting the transition to the clean, decentralised energy systems that will be required to meet greenhouse gas reduction targets, both nationally and globally.



5,200

SOLAR PANELS

installed on the roof of the Coca-Cola Amatil Distribution Centre in Sydney's Eastern Creek

Energy intensity – alcoholic beverages

